

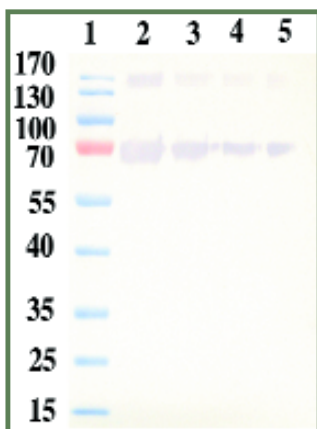
Targeting Tools: Featured Products

Anti-Human Serum Albumin

NEW!

Human Serum Albumin (HSA) is a major constituent of human blood plasma comprising 55% of plasma proteins. Human serum albumin is produced in the liver and plays an important role in maintaining fluid balance in the blood.

Affinity-purified Antibody to HSA, rabbit polyclonal, (Cat. #AB-40AP) is affinity-purified with HSA on CnBr-activated Sepharose 4 Fast Flow followed by affinity adsorption with human IgG. Applications for this antibody include ELISA and immunoblotting.



Lane 1: Molecular weight standards (Fermentas PageRuler)
 Lane 2: 200 ng of HSA probed with Rabbit anti-HSA affinity-purified at 1:10,000
 Lane 3: 100 ng of HSA probed with Rabbit anti-HSA affinity-purified at 1:10,000
 Lane 4: 50 ng of HSA probed with Rabbit anti-HSA affinity-purified at 1:10,000
 Lane 5: 25 ng of HSA probed with Rabbit anti-HSA affinity-purified at 1:10,000

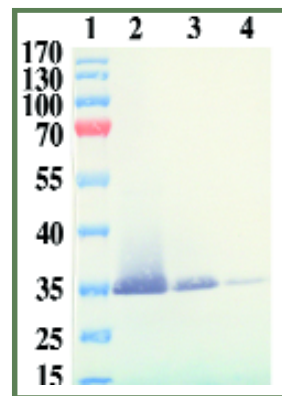
New Saporin Antibody

NEW!

Saporin is a plant enzyme with N-glycosidase activity that depurinates a specific nucleotide in the ribosomal RNA 28S, thus irreversibly blocking protein synthesis.

Affinity-purified Anti-Saporin rabbit polyclonal (Cat. #AB-41AP) is the most recent addition to our line of Saporin antibodies. These antibodies can be used as controls with our Saporin-conjugate immunotoxins, for immunoblotting, and in other applications.

- AB-15 Anti-Saporin, goat polyclonal
- AB-15AP Anti-Saporin, affinity-purified goat polyclonal
- AB-17AP Anti-Saporin, affinity-purified chicken polyclonal
- AB-41AP Anti-Saporin, affinity-purified rabbit polyclonal**



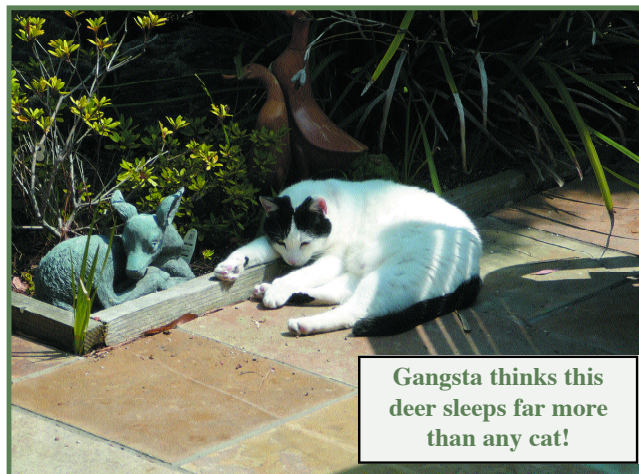
Lane 1: Molecular weight standards (Fermentas PageRuler)
 Lane 2: 1 µg of Saporin probed with AB-41AP at 1:1000
 Lane 3: 200 ng of Saporin probed with AB-41AP at 1:1000
 Lane 4: 50 ng of Saporin probed with AB-41AP at 1:1000

Cytometry Research, LLC

Cytometry Research serves the scientific community as a contract flow cytometry service.

Call now or visit us online to schedule an appointment.
 (877) 889-2288 toll-free • (858) 642-1989 fax
www.CytometryRes.com

- Ship your samples to us using an overnight service.
- Provide a protocol for cell preparation if you want us to stain, fix, or otherwise process your samples.
- Your data will be sent to you via email within **one business day** of receipt of samples.



Gangsta thinks this deer sleeps far more than any cat!