

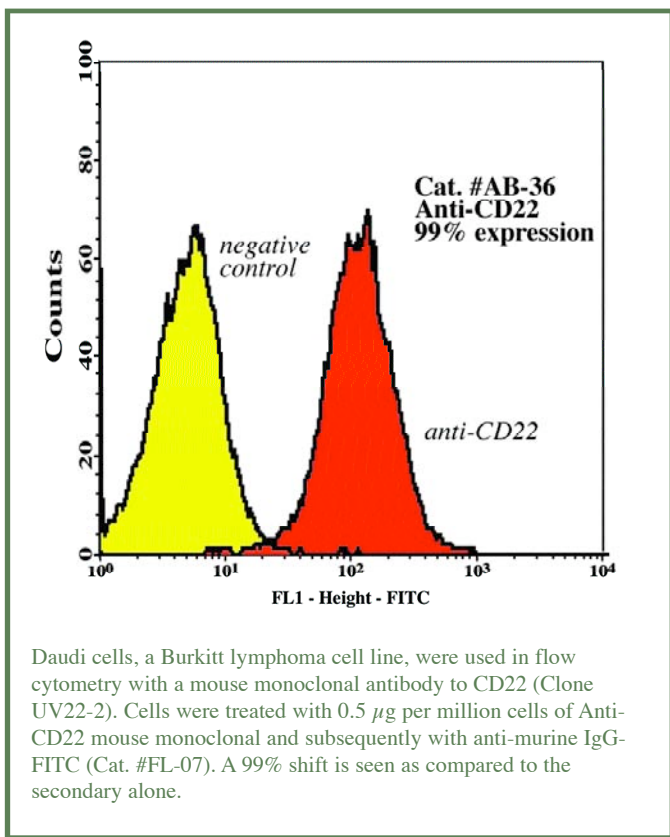
# Targeting Tools: Featured Products

## Targeting B-Cell Leukemias and Lymphomas

### Anti-CD22 (UV22-2) Mouse Monoclonal

This IgG1k antibody (Cat. #AB-36) recognizes the group A epitope of the human B-cell antigen, CD22. Clone UV22-2 reacts exclusively with cells of human B-cell lineage.

The fluorescent conjugate mouse IgG-FITC (Cat. #FL-07) is available as a research tool to use with this and other mouse monoclonal antibodies.



Visit [www.ATSBio.com](http://www.ATSBio.com) to see a complete list of products.

Ahh. Nothing like a little snooze while watching one of the great old movies. I'm sure Doug will tell me how it turns out.



\$100 product credit for anyone who can identify the movie!

### Anti-CD22-SAP Immunotoxin

This immunotoxin (Cat. #IT-37) will specifically eliminate cells that possess the group A epitope of the human B-cell antigen, CD22. Cells that do not express CD22 will be unaffected.

This immunotoxin is also available in a kit (Cat. #KIT-37) that includes equal amounts of immunotoxin, unconjugated saporin, unconjugated antibody, and a control immunotoxin, Mouse IgG-SAP.

